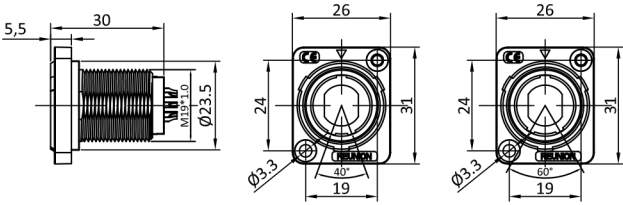


2D REFERENCE SIZE (UNIT: mm)



- HOUSING MATERIALS: ABC/PC.
- INSULATOR MATERIALS: PPS.
- CONTACTS MATERIALS: COPPER ALLOY
- MATING CYCLE: 2000 TIMES. (GB/T5095.1)
- IP LEVEL: IP65. (GB/T4208)
- OPERATING TEMPERATURE: -40°C~+85°C.
- SALT SPRAY CORROSION: >48h. (IEC 60512-6 test 11f)



Images is for illustrative purpose only

PART NUMBERING SYSTEM:

FLANGE SOCKET

MODEL

KEY:  
A=40° ; B=60° ;

SERIES

CONTACTS:3=MULTICORE;  
08=8PINS (2~16PINS  
OPTIONAL)

HOUSING:  
G=GREY;  
W=WHITE;  
A=BLACK;

HOUSING MATERIALS:  
P=ABS/PC;S=PSU;

SM\*·2P308·APL\*

COLOR FOR NUT:  
G=GREY;B=BLUE;W=WHITE;  
L=BLACK;R=RED;Y=YELLOW;  
M=BROWN;O=ORANGE;V=GREEN

CONTACTS TYPE:  
A=SOLDER PIN;L: SOLDER HOLES;

\*=CUSTOMERS CAN CHOOSE THE MODEL ACCORDING TO THEIR OWN NEEDS

P/N	CORE	TYPE	PIN DIA (mm)	WORK VOLTAGE (KV rms)		RATED CURRENT (A)	CONTACT RESISTANCE (mΩ)	CABLE (AWG)	
				CONTACTS-CONTACTS	CONTACTS-SHELL			min.	max.
SM*.2P503.APL*	3		1/1.6 2/2.0	3.0	/	16/22	5	24	13
SM*.2P405.APL*	5		2/0.9 3/2.0	1.5/2.5	/	9/22	5	24	13
SM*.2P305.APL*	5		5/1.6	2.0	/	16	5	24	17
SM*.2P411.APL*	11		3/1.6 8/0.7	3.0	/	16/5	5/10	28	15
SM*.2P308.APL*	8		8/0.9	1.5	/	9	10	30	20
SM*.2P309.APL*	9		9/0.9	1.5	/	9	10	30	20
SM*.2P316.APL*	16		16/0.9	1.2	/	9	10	32	22

\*=CUSTOMERS CAN CHOOSE THE MODEL ACCORDING TO THEIR OWN NEEDS